



Super G™ Wireless PCI Adapter

Model # AWLH4130

User's Manual

Ver. 1A

Table of Contents

1. Introduction	3
1.1 Package Contents	3
1.2 Features	3
1.3 System Requirements	3
2. Installation	4
2.1 Install Driver & Utility	4
2.2 Verify Driver Installation	7
2.3 Configure the PCI Adapter	9
3. Configure the WLAN Monitor	12
3.1 Configuration Tab	12
3.2 Configuring WEP Encryption	14
3.3 Configuring WPA-PSK/WPA2-PSK Encryption	15
3.4 Status Tab	16
3.5 Option Tab	18
3.6 About Tab	20
Appendix - Technical Specifications	21
Technical Support	22

1. Introduction

The **108Mbps Super G™ Wireless PCI Adapter** is an advanced IEEE 802.11b/g compatible, high performance wireless card that supports data transfer speeds of up to 54 Mbps or 108Mbps in **SuperG** mode.

The **108Mbps Super G™ Wireless PCI Adapter** comes with software drivers for the most popular Microsoft Windows operating systems and can be integrated into a larger network, running Windows 2K or XP in either **Ad Hoc** mode (without an Access Point) or **Infrastructure mode** (with an Access Point).

1.1 Package Contents

Before you begin the installation, please check the items of your package. The package should include the following items:

- 108Mbps Super G™ Wireless PCI Adapter
- Antenna
- Quick Installation Guide
- Manual and Drivers/Utility on CD

1.2 Features

- Compatible with IEEE 802.11g/b higher data rate up to 108Mbps*
- Maximum reliability, throughput and connectivity with automatic data rate switching
- Supports wireless data encryption with 64/128/152-bit WEP for security
- Supports infrastructure networks via Access Point and ad-hoc network via peer-to-peer communication
- Built-in dual diversity antenna for the multi-path environment
- Supports WPA and AES enhanced security
- Friendly user configuration and diagnostic utility

1.3 System Requirements

- A computer with an available PCI slot
- Windows 2000 and XP

- At least 32 MB of memory and a 300 MHz processor or higher
- An 802.11b/g Access Point for (Infrastructure Mode) or another computer with an 802.11b/g wireless card installed (for Ad-Hoc Mode)

2. Installation

2.1 Install Driver & Utility

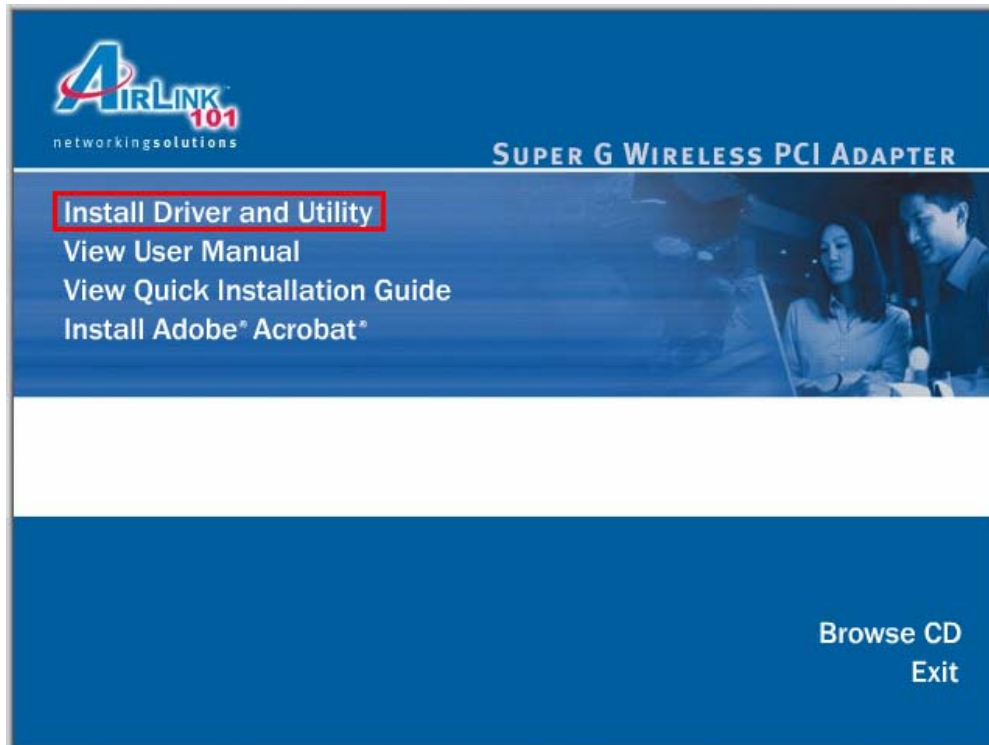
This section provides instructions on how to install the **Super G™ Wireless PCI Adapter**. The driver is installed along with the utility.

Note: Be sure to power off the computer before inserting the PCI adapter.

Step 1 Insert the PCI Adapter into an available PCI slot and turn on the computer. Windows will detect the adapter and request for a driver. Click **Cancel** to quit the wizard.

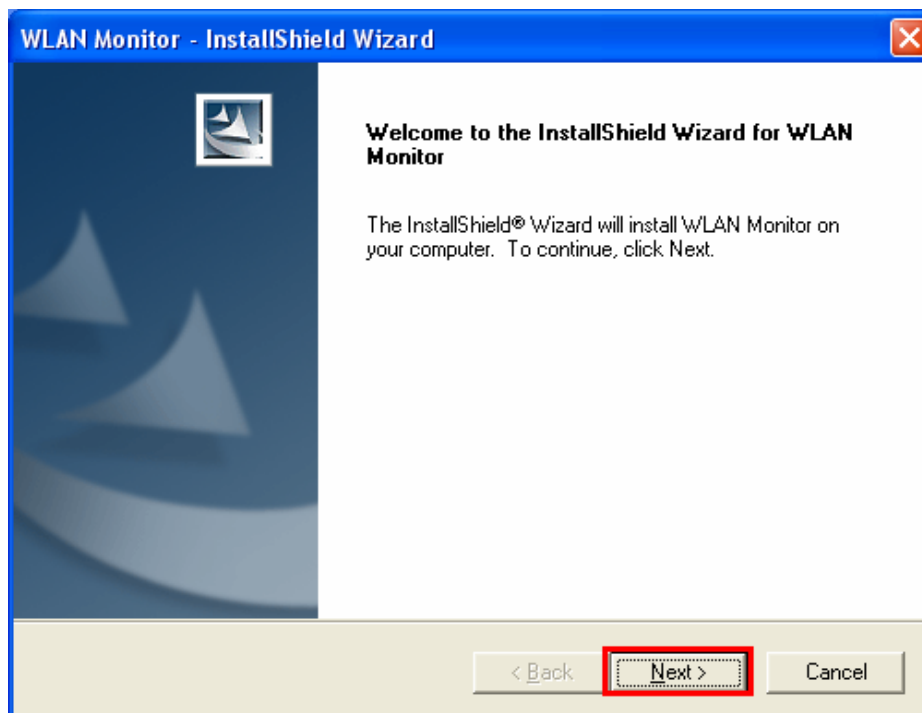


Step 2 Insert the Driver & Utility CD into your CD drive and select **Install Driver and Utility** from the menu.

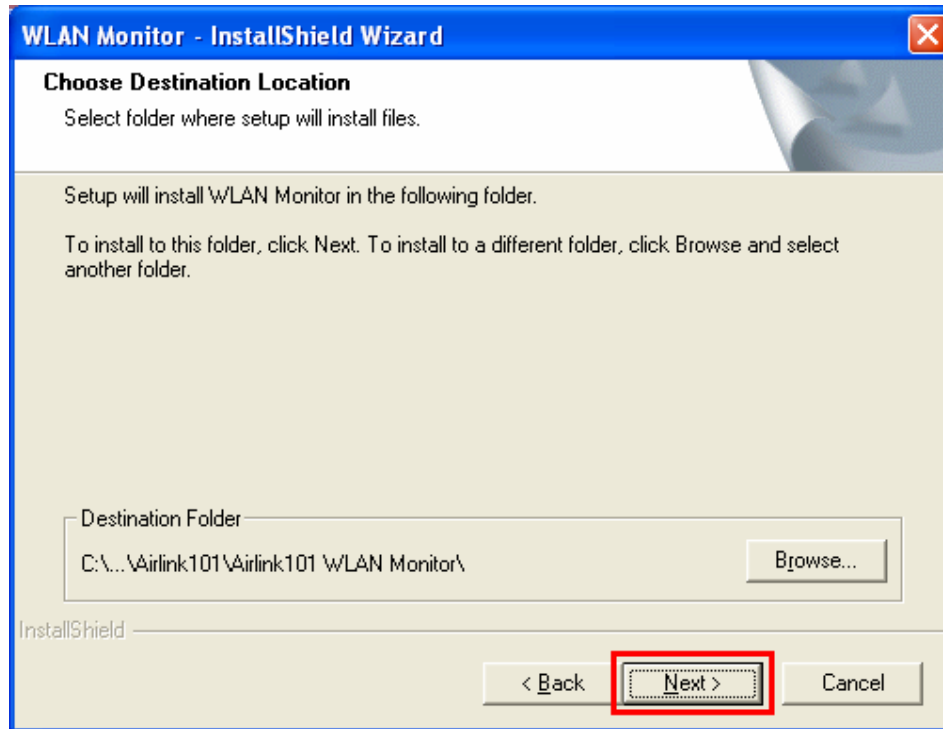


Note: If the autorun screen doesn't appear automatically go to **Start, Run**, and type **D:\Utility\Setup.exe** (where **D** is the letter of your CD drive) and click **OK**.

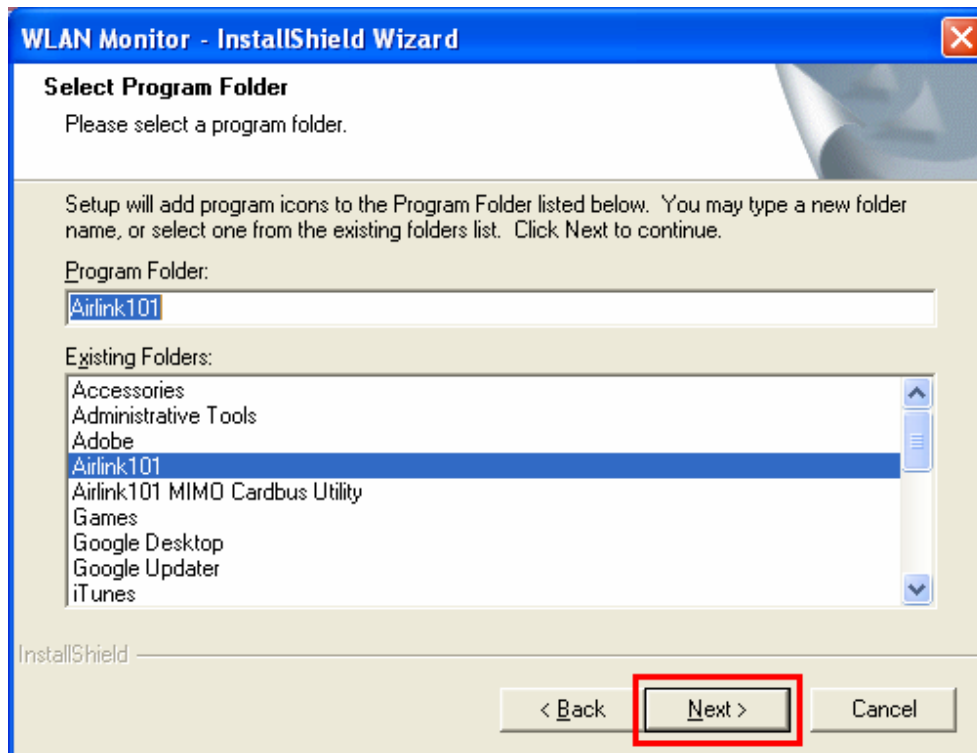
Step 3 Click **Next** at the welcome screen.



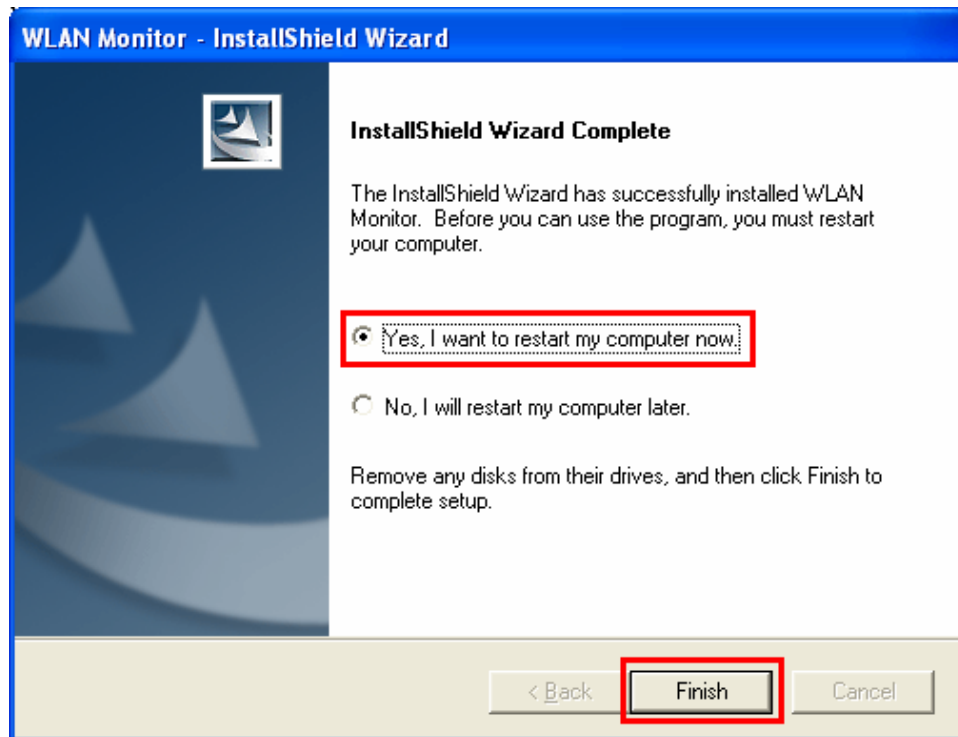
Step 4 Click **Next** to accept the default destination folder to install the software or click **Browse** to manually select a different destination folder.



Step 5 Click **Next** at the Select Program Folder screen.



Step 6 Verify “**Yes, I want to restart my computer now**” is selected and click **Finish** to restart your computer.



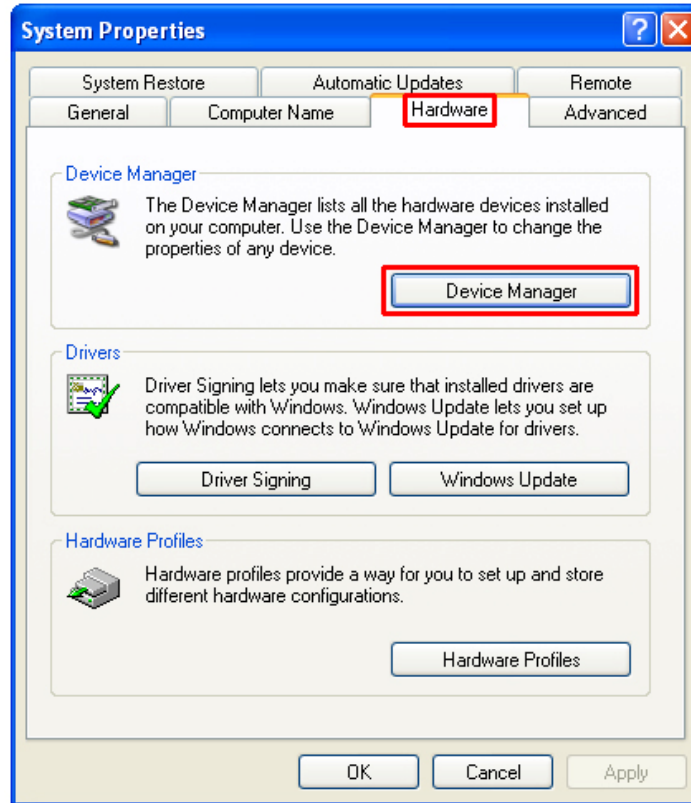
Step 7 After restarting the computer, Windows will automatically detect the PCI adapter and install the driver for it.

2.2 Verify Driver Installation

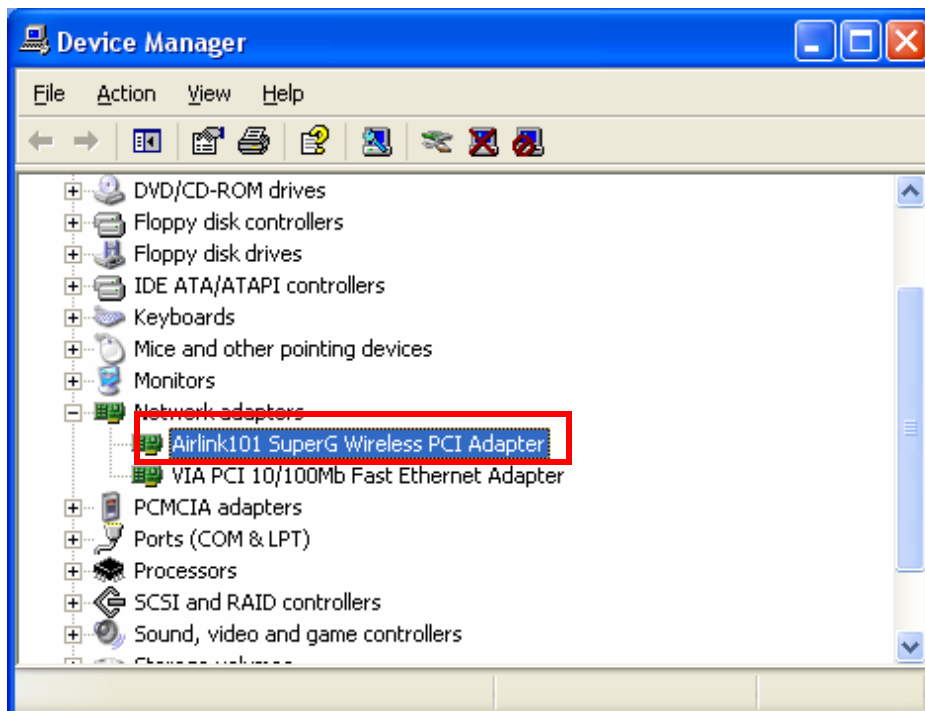
To verify if the driver has been installed successfully, please perform the following steps.

Step 1 Right-click on **My Computer** from your desktop and select **Properties**.

Step 2 Select the **Hardware tab** first then click on **Device Manager**.



Step 3 Expand **Network adapters** and verify that **Airlink101 SuperG Wireless PCI Adapter** is in the list and that no yellow question mark or exclamation mark is beside it.



2.3 Configure the PCI Adapter

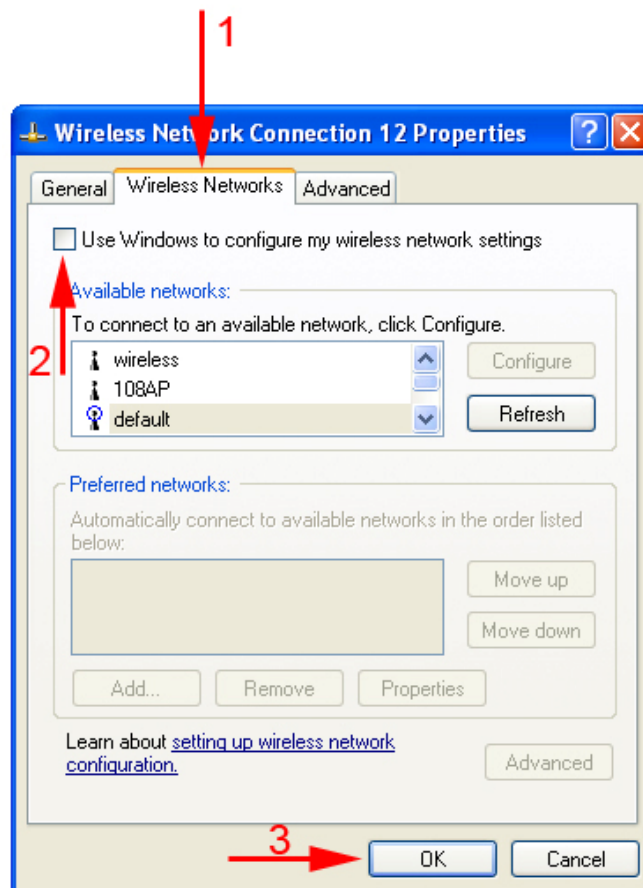
Note to Windows XP Users:

You must disable the Wireless Zero Configuration Utility in order to use the WLAN Monitor. Please refer to the following steps to disable the Wireless Zero Configuration Utility.

Step 1 Double-click on the **Wireless Network Connection Icon** in the system tray, then click on **Properties** or **Advanced**.



Step 2 Go to the **Wireless Networks** tab, uncheck the “**Use Windows to configure my wireless network settings**” check box and click **OK**.

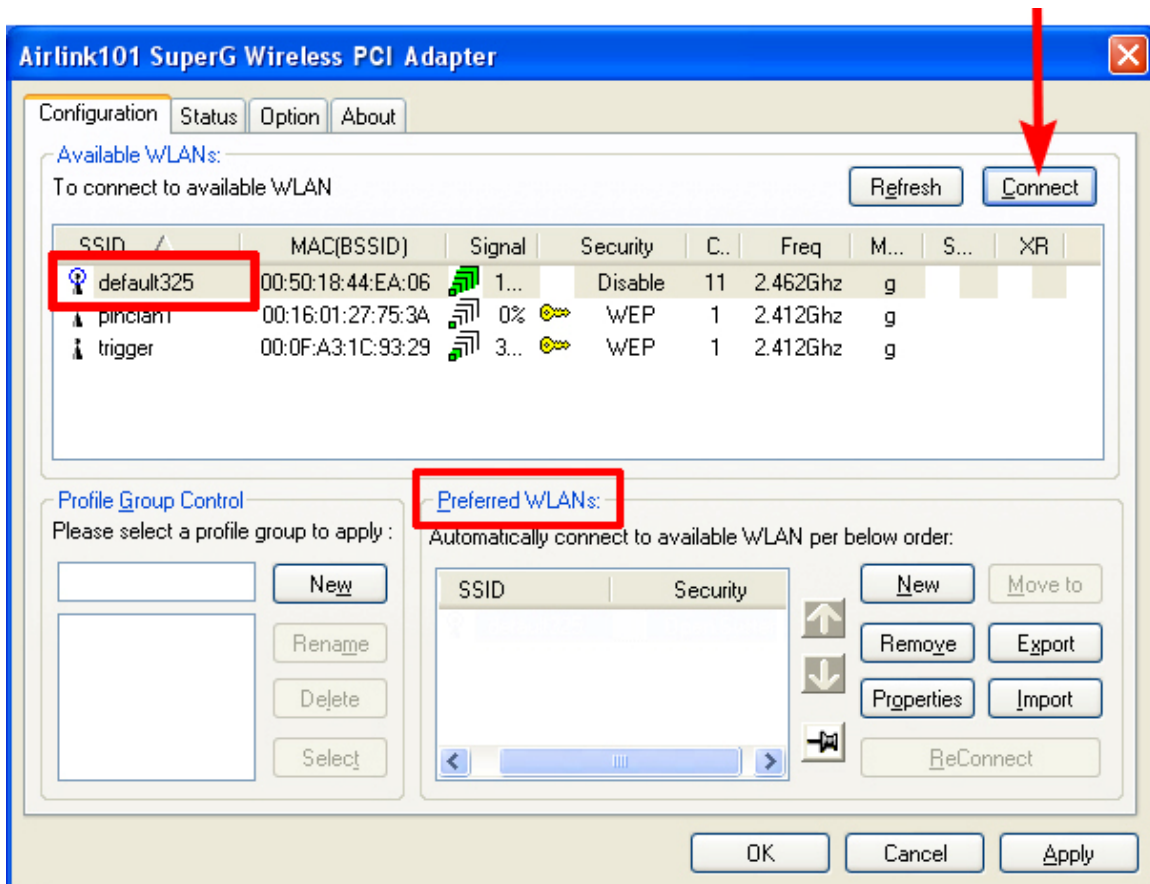


Step 3 To open the PCI Adapter's utility, double-click on the WLAN Monitor Icon in the system tray.

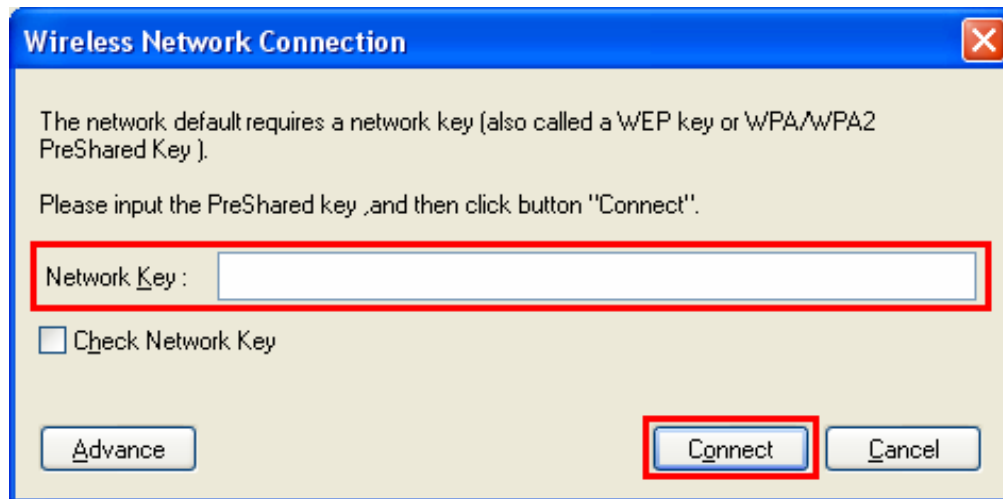


The utility automatically adds an available wireless network to the **Preferred WLANs** box. If no SSID is added, or if the SSID is wrong, please refer to the following steps to join the appropriate wireless network.

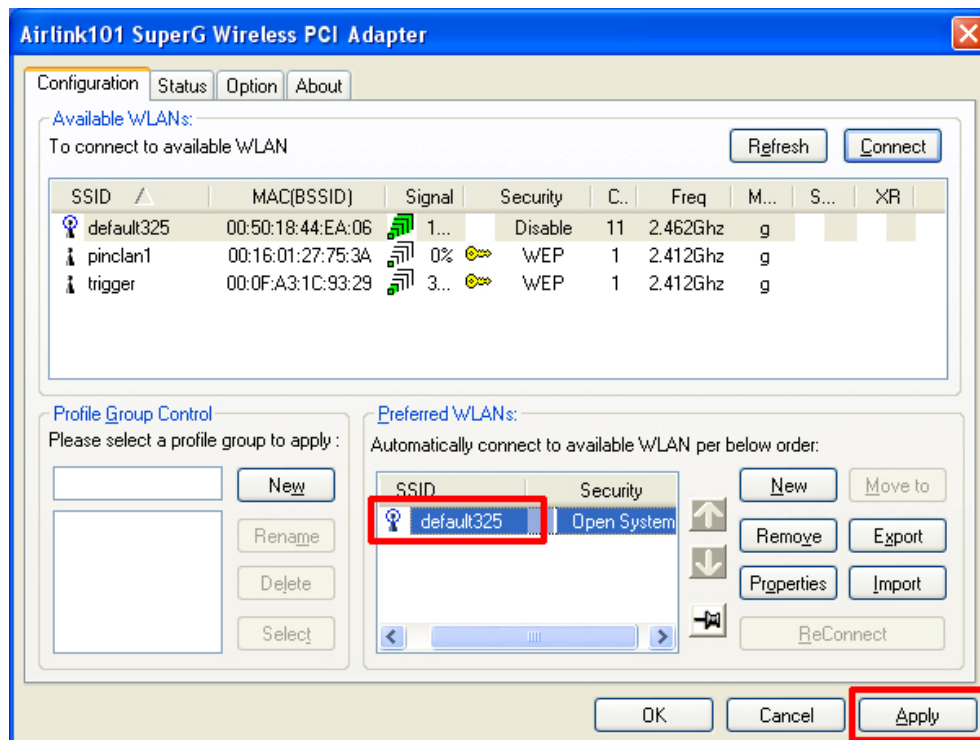
Step 4 Select the SSID of the wireless network you wish to connect to from the **Available WLANs** box and click **Connect**.



Step 5 You will be prompted for the security key if you have one setup for your wireless network. Verify the key you enter is correct and click **Connect**.

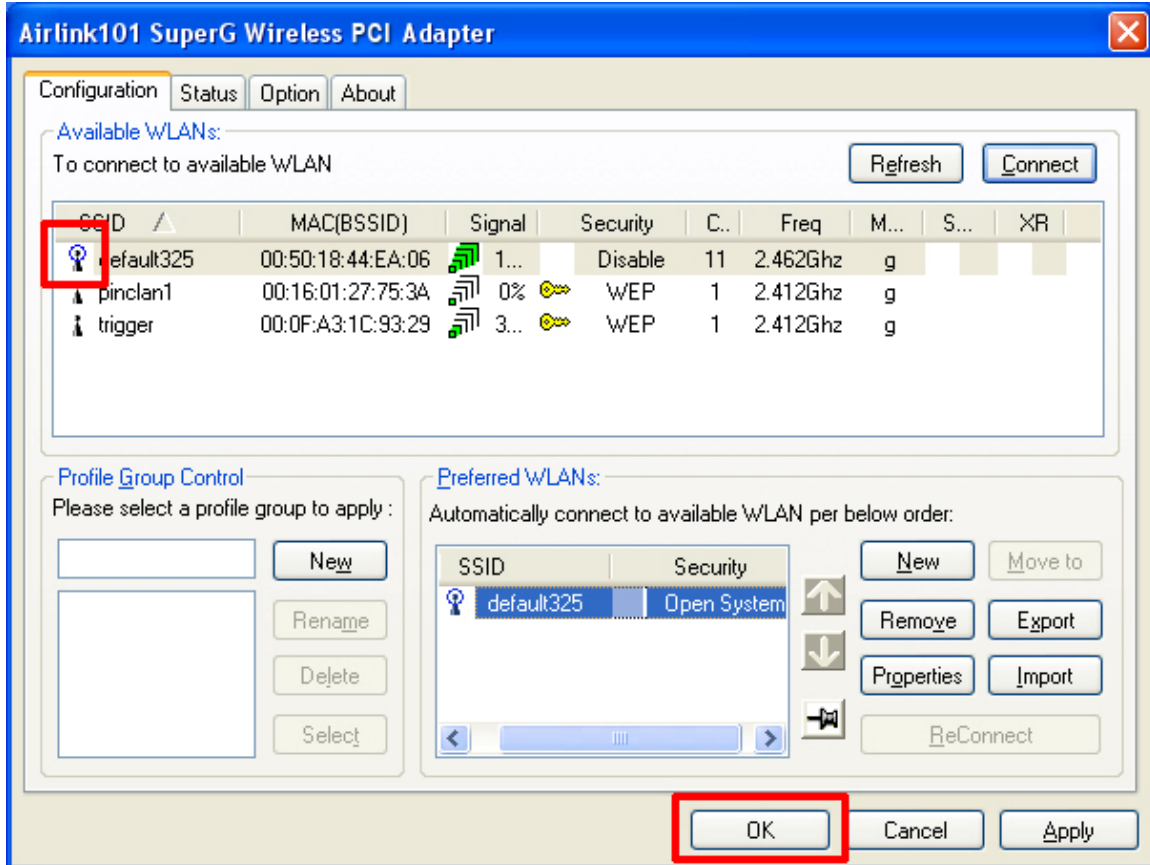


Step 6 Verify the SSID you have selected is in the **Preferred WLANs** box and click **Apply**.



Note: Be sure to remove the wrong SSID from the **Preferred WLANs** box before adding any new SSID. You can remove the wrong SSID by selecting it and clicking on **Remove**.

Step 7 A blue circle will surround the SSID you have chosen. Click **OK**.



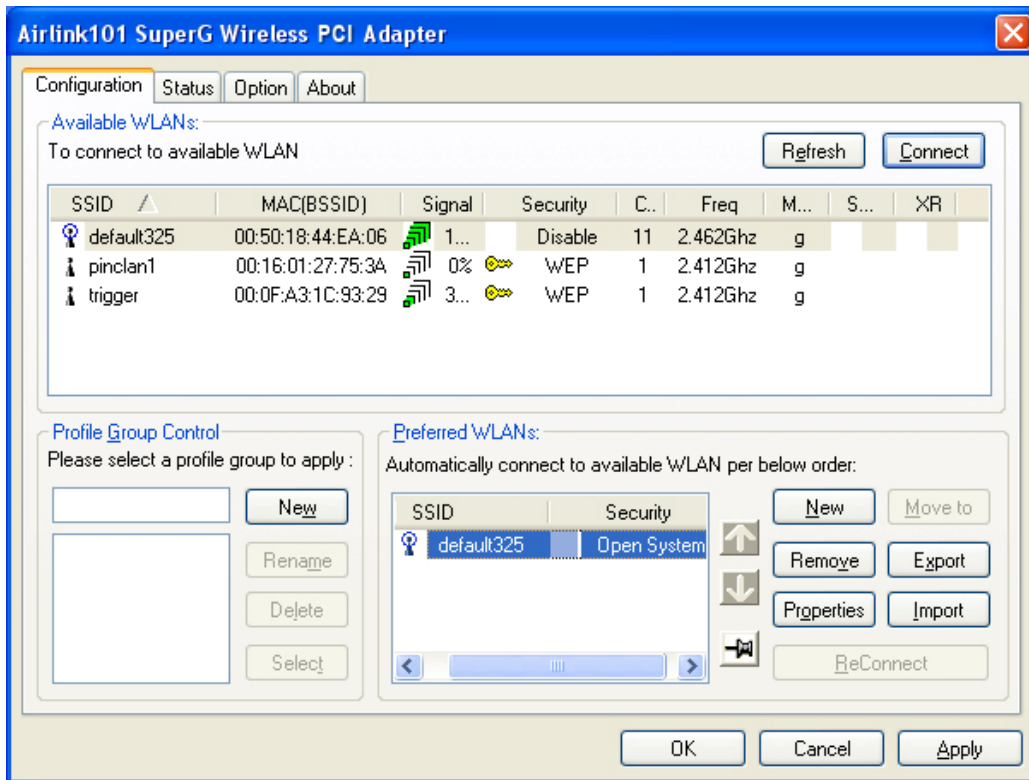
Congratulations! The installation for your Super G PCI Adapter is complete.

3. Configure the WLAN Monitor

This section describes the various functions of the **WLAN Monitor** that you can configure, including the settings of wireless encryption.

3.1 Configuration Tab

The Configuration tab displays a list of available Access Points.

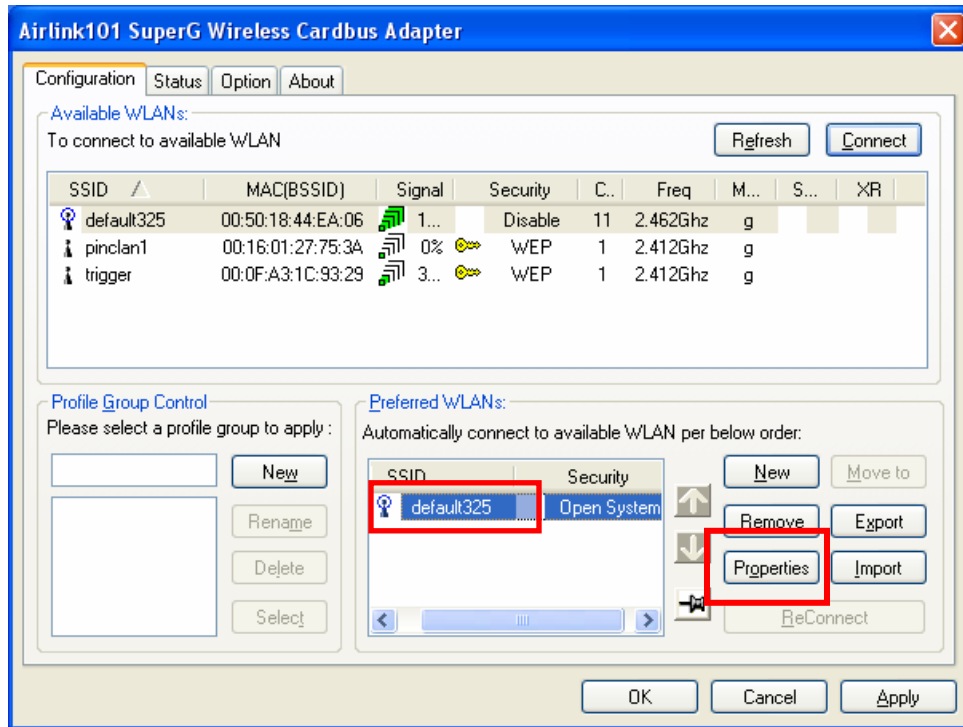


Available WLANs: displays a list of available Access Points that you can connect to. To update the list, click on **Refresh**. To manually add a SSID to the list, click on **Connect**.

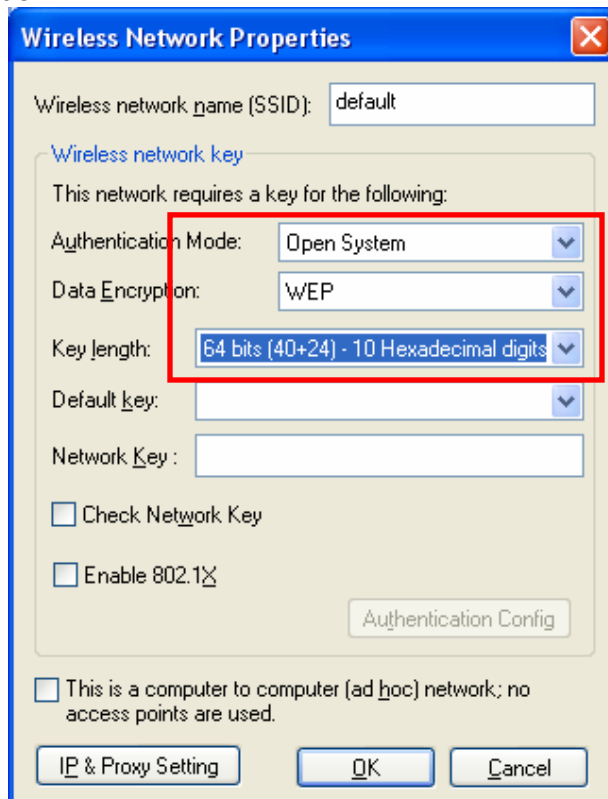
Profile Group Control: once you have added all the SSID you want to the preferred WLANs, you can group them by giving them a name in the **Profile Group Control** box and click **Add**. Any settings you set to the group will automatically be applied to all WLANs belonging to that group.

Preferred WLANs: you may add a preferred SSID which the wireless adapter will automatically connect to upon startup. To add a new SSID from the available WLANs list, select the desired SSID and click **Connect**. To add a new SSID that is not listed in the available WLANs list, click on **New** and manually enter the name of the SSID. If you have more than one preferred WLAN, you may move the SSID up or down the list. Each time the computer starts up, the wireless adapter will attempt to connect to the SSID listed beginning from the top of the list. If you wish to configure the properties of a WLAN, highlight it and click on **Properties**.

3.2 Configuring WEP Encryption



The following screen will appear after you click on the **Properties** button from the Preferred WLANs box.



If your existing wireless network has **WEP** encryption enabled, you need to configure the wireless adapter with the identical encryption settings in order to establish a connection.

Step 1 Verify that the Wireless network name matches the **SSID** of the Access Point you're trying to connect to.

Step 2 Verify the **Authentication Mode** is set to the same setting as the Access Point you're trying to connect to.

Step 3 Select **WEP** from the **Data Encryption** drop-down menu.

Step 4 Choose the **same Key length** that the Access Point is using.

Step 5 Enter the identical key in the corresponding key number

Step 6 Make sure the default key is the same key number used by the Access Point.

Note: both the key and the key number must be identical with the Access Point.

Step 7 Click **OK** to save your settings.

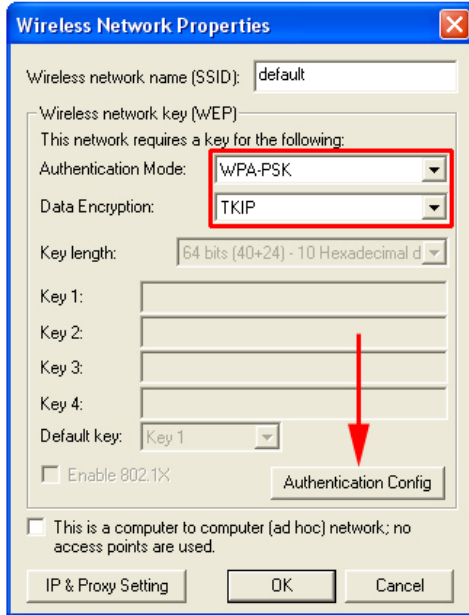
Step 8 Click **Apply** and **OK**.

3.3 Configuring WPA-PSK/WPA2-PSK Encryption

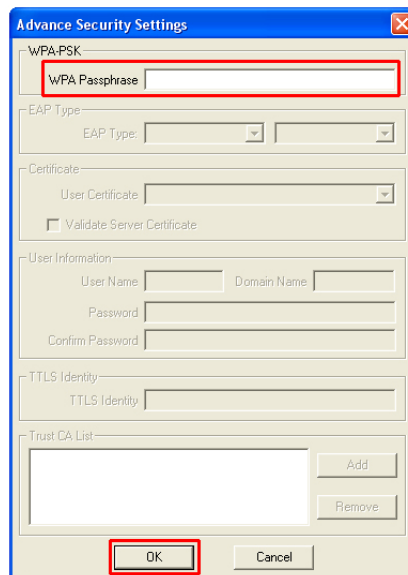
If your existing wireless network has WPA-PSK or WPA2-PSK encryption enabled, you need to configure the wireless adapter with the identical encryption settings in order to establish a connection.

Step 1 Go to the **Properties** screen of the preferred WLAN as described above and verify that the Wireless network name is the **SSID** of the Access Point you're trying to connect to.

Step 2 Choose **WPA-PSK** or **WPA2-PSK** from the **Authentication Mode**. Select **TKIP** or **AES** as the **Data Encryption** and click on the **Authentication Config** button.

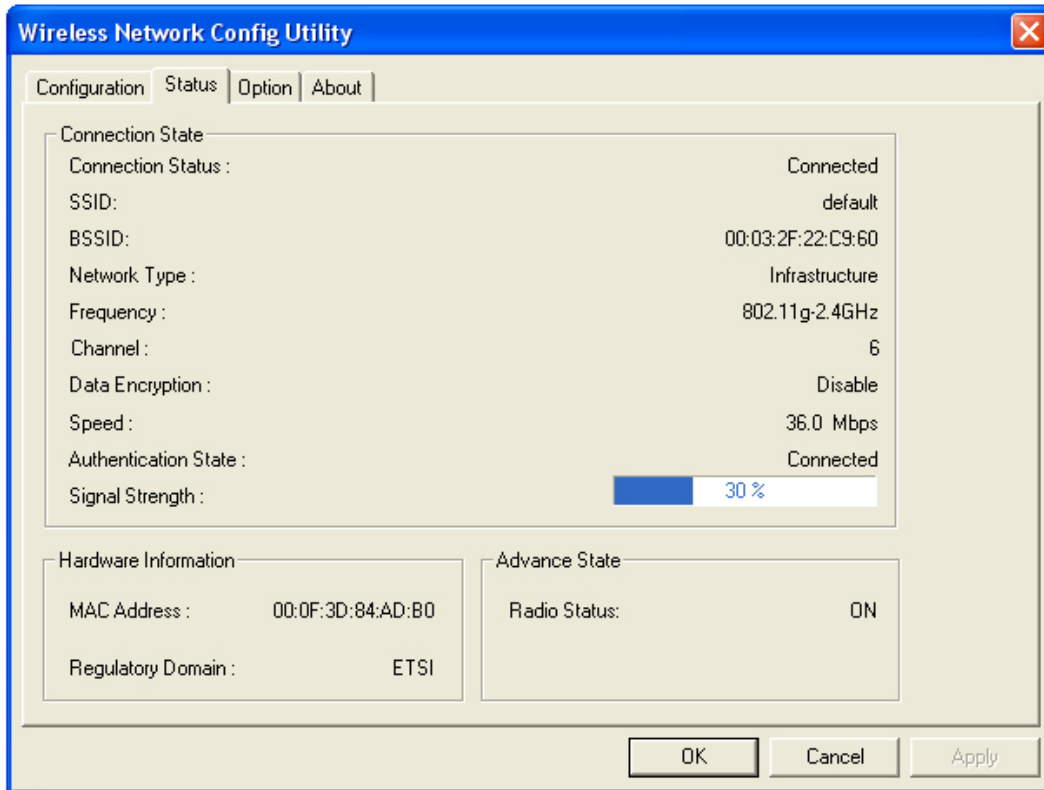


Step 3 Enter a passphrase in the WPA Passphrase field and click **OK**. (Note: the passphrase must be between 8 – 63 characters long).



3.4 Status Tab

Under the **Status Tab** you will find information on the connection state, hardware information, and advanced state.



Connection Status: displays the status of the connection

SSID: The SSID that the wireless adapter is connected to

BSSID: The MAC Address of the Access Point that the wireless adapter is connected to

Network Type: The network connection type

Frequency: The frequency that the wireless adapter is using

Channel: The channel number that the wireless adapter is using

Data Encryption: Displays if WEP encryption is disabled or enabled

Speed: Displays the speed of the connection

Authentication State: Displays the authentication state

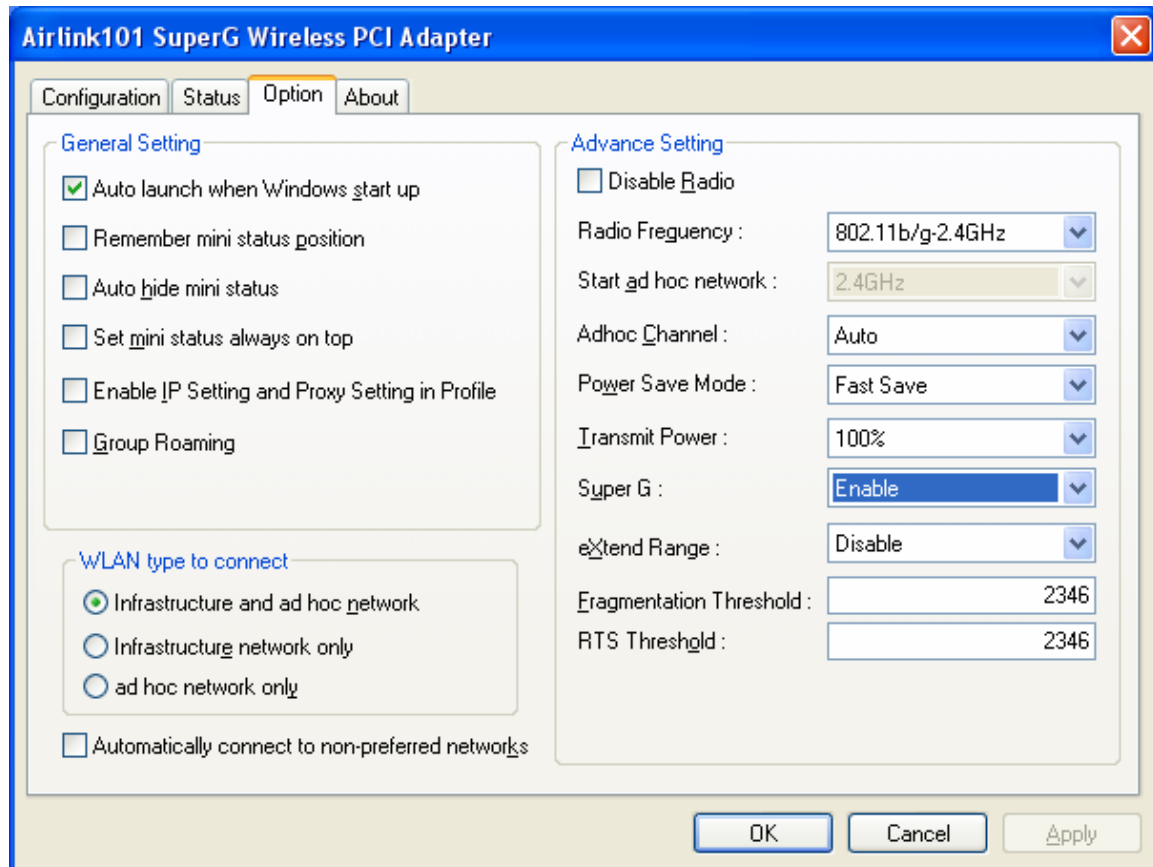
Signal Strength: A bar shows the signal strength of the connection

Hardware Information: Displays the MAC Address of the wireless adapter and the regulatory domain.

Advanced State: Displays whether the radio signal is On or Off.

3.5 Option Tab

Under the **Option Tab**, general settings and advanced settings are shown.



General Setting:

Auto launch when Windows starts up: check the box to launch the WLAN Monitor when Windows starts up

Remember mini status position: remembers the mini status position

Auto hide mini status: auto hides the mini status screen

Set mini status always on top: the mini status screen will always stay on top of the desktop

Enable IP setting and Proxy setting in profile: allows you to back up previous IP settings

Group Roaming: Check the box to enable group roaming.

WLAN type to connect:

Infrastructure and Ad-Hoc network: for connecting to either an access point or

a peer network client without the use of an access point

Infrastructure: for connecting to an access point only

Ad-Hoc: for connecting directly to another wireless client without using an Access Point or wireless router. (Both wireless clients must be set to using Ad-Hoc mode).

Automatically connect to non-preferred networks: Check the box to connect to non-preferred networks upon startup.

Advance Setting:

Disable Radio: Check the box to disable the radio signal

Radio Frequency: 802.11b/g switches automatically between 802.11b and 802.11g speed depending on the other wireless devices. 802.11b will only connect at 802.11b speed (11 Mbps or lower).

Start ad hoc network: Choose the appropriate frequency for your ad-hoc network

Ad-Hoc Channel: Choose the desired channel for your ad-hoc network. All devices in the ad-hoc network must use the same channel.

Power save Mode:

Fast Save - This setting consumes half the power.

Max Save - This setting consumes the least power.

Disable - This default setting consumes the most power.

Transmit Power: Choose to transmit power from 100%, 50%, 25%, 12.5% and Lowest.

Super G: Enable or Disable the Super G function (108Mbps). In order to transfer speeds at 108 Mbps, all wireless devices must be Super G compatible and set to use Super G.

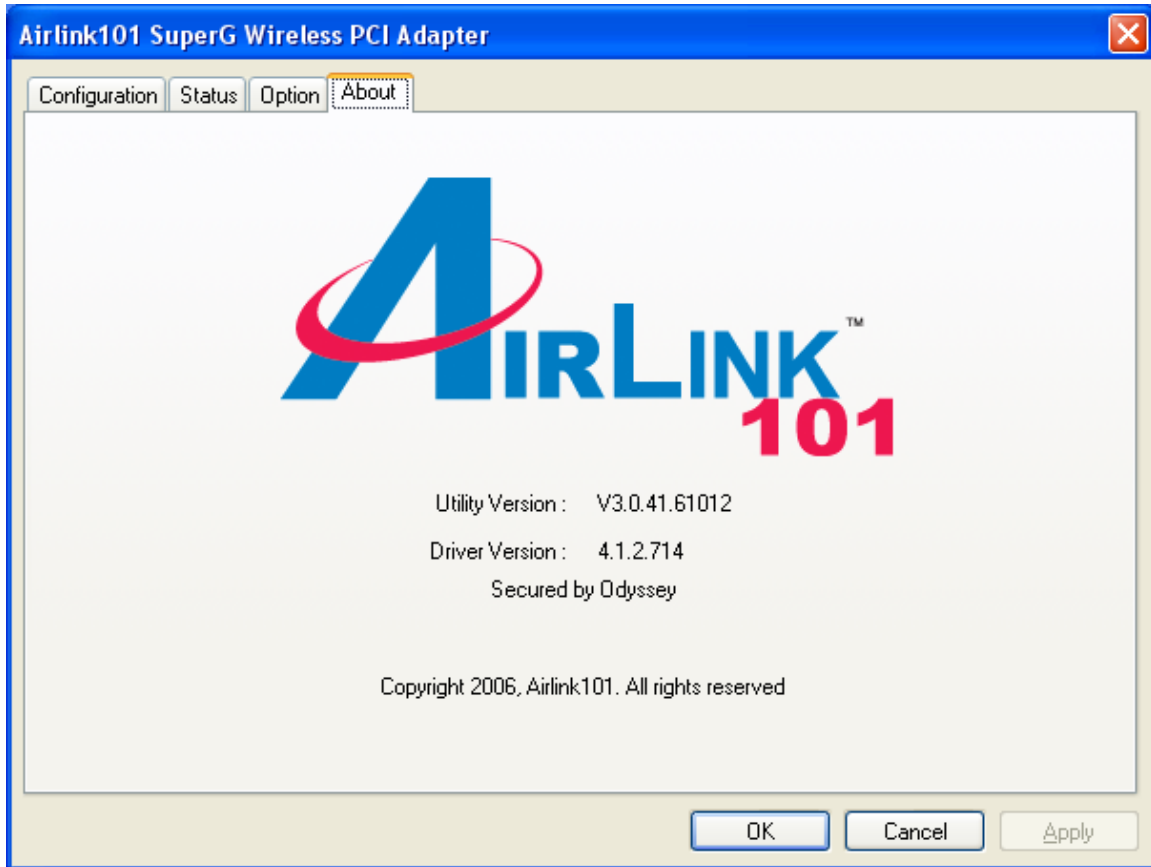
eXtend Range: Enable or Disable eXtend range

Fragmentation Threshold: Set the desired fragmentation threshold

RTS Threshold: Set the desired RTS threshold

3.6 About Tab

Displays the Driver and Utility version



Appendix - Technical Specifications

Standards

- IEEE 802.11b/g, Atheros Super G™

Interface

- PCI Local Bus 2.2
- Low profile and half length
- PCI 32 bit

Chipset

- Atheros

Frequency Band

- 2.400~2.497GHz (Industrial Scientific Medical Band)

Media Access Protocol

- CSMA/CA with ACK

Antenna Type

- Omni-directional dipole antenna with 2dBi

Transmit Power

- 802.11g: +12~15dBm
- 802.11b: 18dBm

Channel Numbers

- 11 channels for United States
- 13 channels for Europe Countries
- 13 channels for Japan

Security

- WEP 64/128-bit encryption
- WPA, WPA2*(for Win2K and XP only)
- 802.1x

Data rate

- 108*Mbps
- 54, 48, 36, 24, 18, 12, 11, 9, 6, 5.5, 2, 1Mbps auto fallback

LED

- Power
- Link

System requirement

- Windows 2K / XP
- Available PCI slot

Environment

- Operating Temp: 0°C to 55°C
- Operating Humidity: 10% to 90% (non-condensing)

Weight

- 82g

Dimensions

- 120 x 60 mm

Warranty

- Limited 1-year warranty

Safety Approvals

- FCC and CE

Technical Support

E-mail: support@airlink101.com

Toll-Free: 1-888-746-3238

Web Site: www.airlink101.com

*Super G™ technology (108 Mbps) can only be obtained when using products with Atheros Super G™ chipset.

*Theoretical maximum wireless signal rate based on Atheros Super G™ and IEEE standard 802.11g specifications. Actual data throughput will vary. Network conditions and environmental factors, including volume of network traffic, building materials and construction, mix of wireless products used, radio frequency interference (e.g., cordless telephones and microwaves) as well as network overhead lower actual data throughput rate.

Copyright © 2007 AirLink101. All rights reserved. AirLink101, the stylized AirLink101 logo, specific product designations, and all other words and logos that are identified as trademarks and/or service marks are, unless noted otherwise, the trademarks and service marks of AirLink101. All other product or service names are the property of their respective holders. AirLink101 products are protected under numerous U.S. and foreign patents and pending applications, mask work rights, and copyrights.